

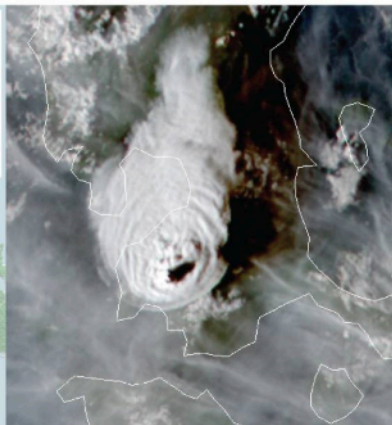
Philippines warns of explosive eruption

January 15, 2020

Thousands of people near Manila were evacuated after the country's second largest volcano, Taal Volcano, erupted Sunday. Since, eruptive activity has continued, leading to nine-mile tall, steam-laden plumes and extreme weather events. The Philippine Institute of Volcanology and Seismology raised the status to Alert Level 4, indicating the hazardous eruption of Taal Volcano is possible within hours to days.

Nearby towns of Agoncillo and Lemery were coated by a thick layer of ash, making roads impassable. School and business closures, travel disruptions, road closures and power outages have all resulted across Manila. Sedgwick would like to ensure that our clients know we are here to help. If you have questions or need assistance, please contact our property team listed below.

Philippines's Taal volcano



- 1m people live within 17km of volcano
- 20,000 sheltering in evacuation centres
- Alert at 2nd-highest level: *hazardous eruption imminent*
- Ash clouds recorded in Quezon City, N. Luzon
- Schools in region and some government offices in Manila closed
- More than 240 flights cancelled
- Last erupted in 1977

Sources: OCHA, reliefweb.int, Japan Meteorological Agency satellite images, NOAA

Mapa: maps4news.com

© AFP

Satellite map of the erupting Taal volcano in the Philippines. (Photo: AFP / Patricio ARANA AND Sabrina BLANCHARD)

Catastrophe contacts

In the first instance, contact:

Stephen Hope, *Head of MCL Global-Asia*

+65 9179 8189 | stephen.hope@global.sedgwick.com

For support on the ground, contact our partners at:

Manila Adjusters & Surveyors Company

+63 8817 5007

Caring counts® | [sedgwick.com](https://www.sedgwick.com)



Copyright © 2020 Sedgwick

Our address is 8125 Sedgwick Way, Memphis, TN 38125

If you do not wish to receive future email, [click here](#).

(You can also send your request to Customer Care at the street address above.)